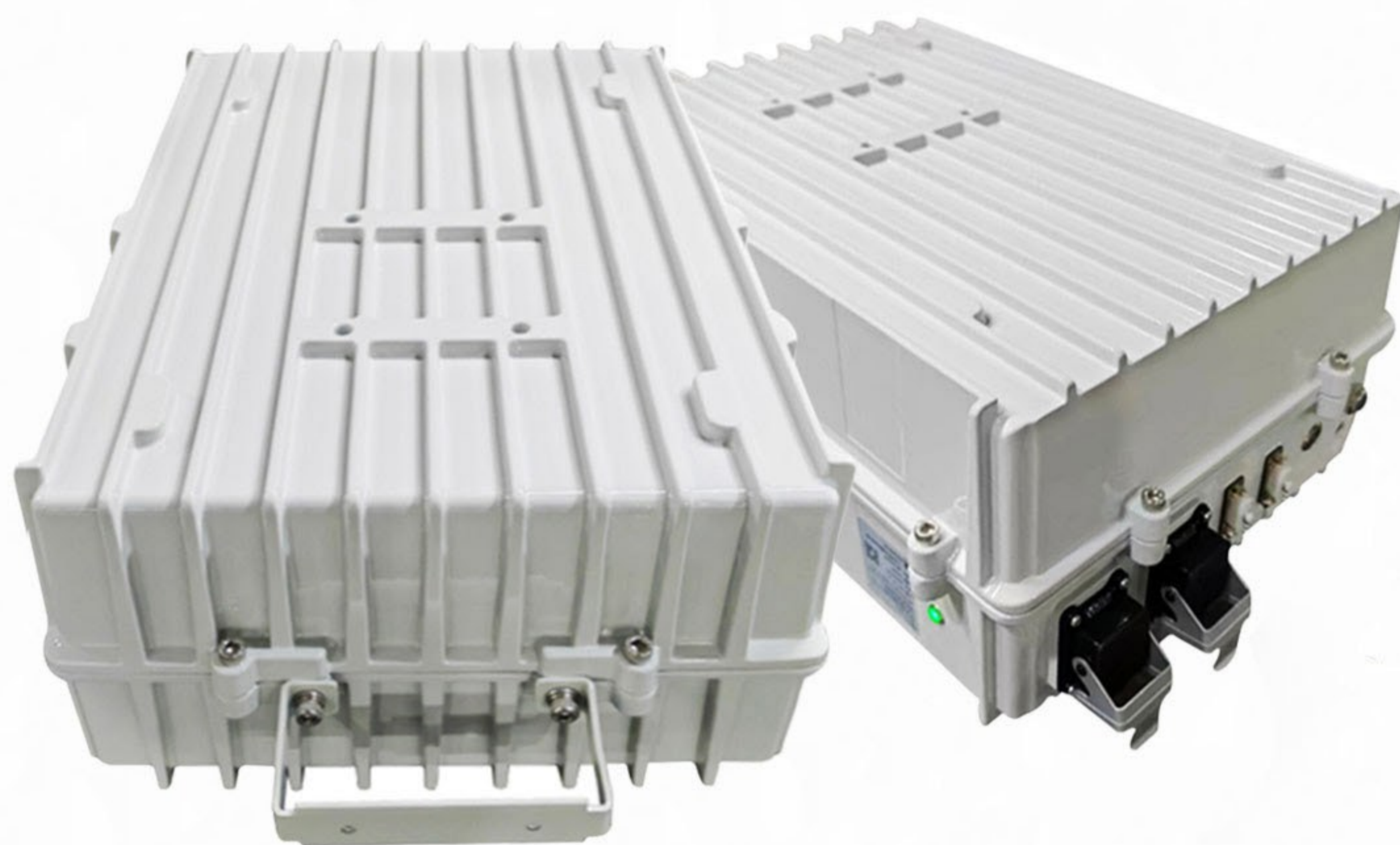
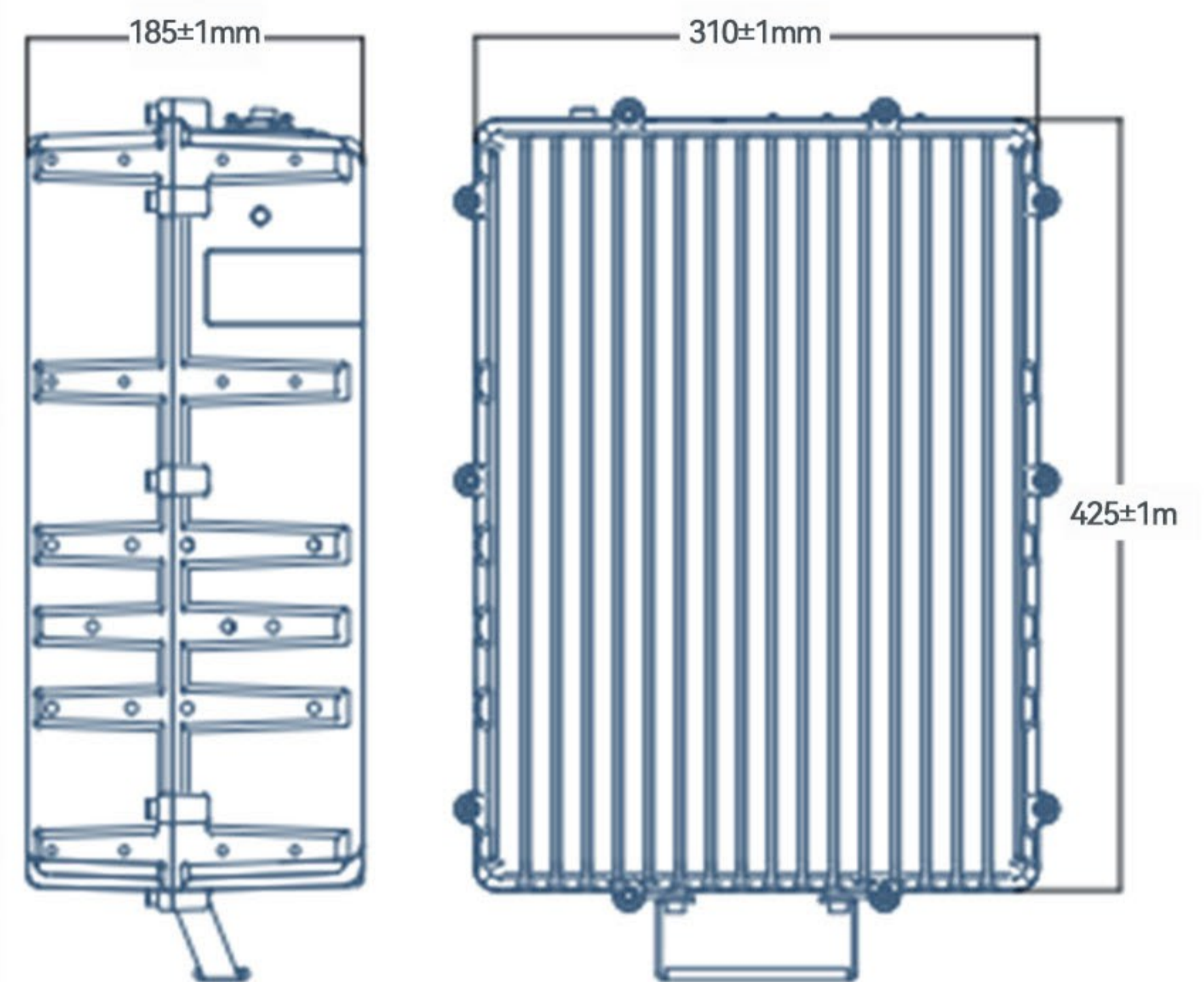


IP65 OUTDOOR LITHIUM BATTERY



CNS-LFP4850-OD



System Profile:

This product is an advanced product developed to meet the requirements of the new backup power supply of the current communication operators under the new trend of communication, with the characteristics of integration, miniaturization, lightness, intelligentization, standardization and environmental protection, it can be widely used in outdoor tower lamp-post station, indoor distributed weak electric well, micro-station and other environmental bad scenes, backup power supply for communication equipment such as RRU and AAU at the end of communication network. The utility model can meet the application scenarios of wall hanging, holding pole, angle steel tower and so on, and support the installation modes of flag installation, paperback installation, landing, etc.

Products in the sun, rain, dripping, wind, freezing, dust, wet outdoor environment, can be normal operation.

System Characteristics:

- ◆ Integrated Design: 16 Series Battery Modules + BMS + aluminum die-casting enclosure.
- ◆ The electric battery cell adopts the controllable double-valve structure design safety valve, the safety is high.
- ◆ The Modular design can be connected in parallel to expand the capacity according to the actual need.
- ◆ High energy density, stable discharge platform, long service life, greatly reduce base station rejection rate.
- ◆ All-round warning and protection functions (overcharge, overdischarge, short circuit, overcurrent, overtemperature, low temperature, self-heating, dormancy)
- ◆ The panel at the bottom of the box body is convenient and suitable for quick operation and outdoor wiring maintenance.
- ◆ Intelligent design, with remote sensing, remote signal functions, through the dynamic monitoring system remote communication.

CONSNANT

Shenzhen Consnant Technology Co.,Ltd.
Building B6, Junfeng Industrial Park, Yonghe Road,
Fuhai Sub-District, Bao'an District, Shenzhen City, 518103 P.R.China.

Web: www.consnant.com
Tel: 0086-755-29772323
Fax: 0086-755-29772626

IP65 OUTDOOR LITHIUM BATTERY



Basic Parameters	
Model Specification	CNS-LFP4850-OD
Battery Type	Lithium iron phosphate
Nominal Voltage	51.2V
Nominal Capacity	50Ah
Cell Specifications	3.2V/50Ah
Battery Pack Mode	16 Single cells + BMS + aluminum outer case
Battery Pack Size	W310×D185×H425±1mm
Weight	31±1.0 kg
Working Temperature	-20 ~ 60°C
Storage Temperature	0 ~ 40°C
Working Relative Humidity	≤90%(40°C±2°C)
Work Altitude	0 ~ 3600m
Working Atmospheric Pressure	70kpa-106kpa
Noise	0 db
Cycle Life	3600 Times
Charging Technology & Operation Parameters	
Total Voltage & Overvoltage Protection	58.0V
Total Voltage & Overvoltage Protection Delay Time	2000mS
Charge Excessive Alarm	≥ 23A
Charge Overcurrent Alarm Delay Time	1000mS
Charging Over-Current Protection	≥25A
Charge Overcurrent Protection Delay Time	15000mS
Charging High Temperature Alarm	40°C
Charging Low Temperature Alarm	2°C
Charging High Temperature Protection	60°C
Charging Low Temperature Protection	0°C
Discharge Technology & Operation Parameters	
Discharge Current	0A ~ 50A
Single-Cell Overdischarge Alarm	2.90V
Single-Cell Overdischarge Alarm Delay Time	2000mS
Single-Cell Overdischarge Protection	2.70V
Delay Time of Single-Cell Overdischarge Protection	2000mS
Total Voltage Overdischarge Alarm	49.0V
Total Voltage Alarm Delay Time	1000mS
Total Voltage Release Protection	40.0V
Total Voltage Release Protection Delay Time	2000mS
Discharge Overcurrent Alarm	≥55A
Overdischarge Alarm Delay Time	1000mS
Discharge and Overcurrent Protection	≥65A
Drain Overcurrent Protection Delay Time	15000mS
Discharge High-Temperature Alarm	40°C
Discharge Low-Temperature Alarm	-10°C
Discharge High-Temperature Protection	60°C
Discharge Low-Temperature Protection	-20°C